

Plaspanel Installation Techniques

PART 1: EXPANSION & CONTRACTION

Issue: 1 Feb 2006

Technical Data Sheet

It is important when installing Plaspanel (HDPE) that the material properties are considered such as expansion and contraction rates etc. particularly for external applications. These are guidelines to assist however due to variations in conditions you must ensure your installation is correct for your application.

Figure 1

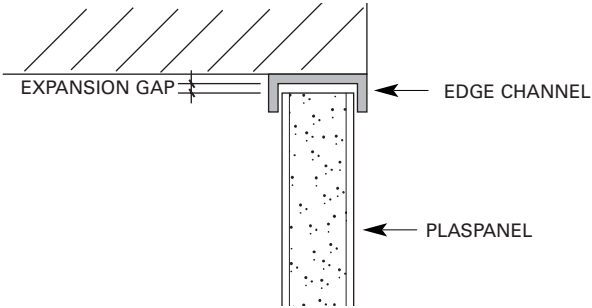


Figure 2

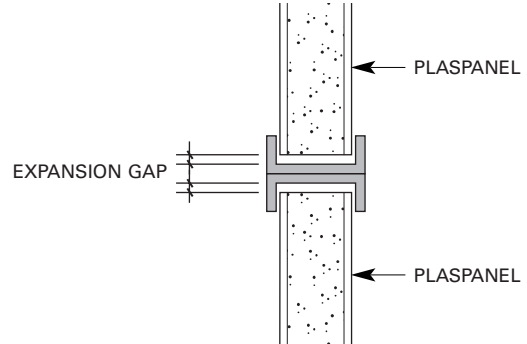


Figure 3

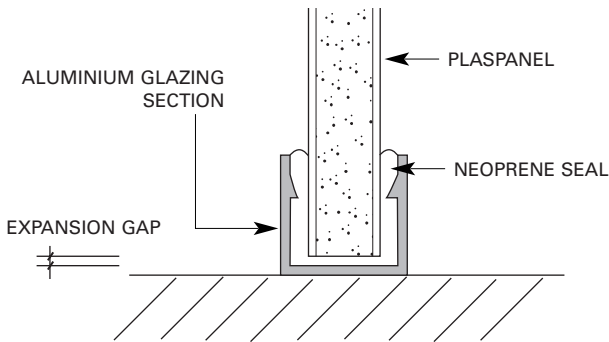


Figure 4

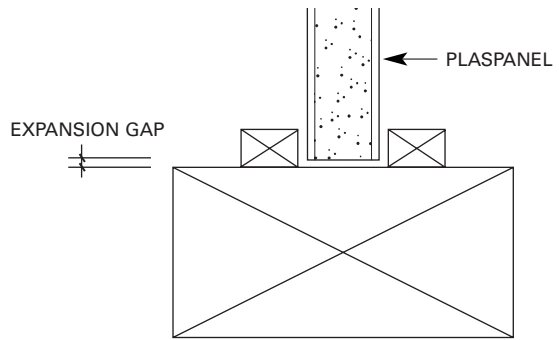


Figure 5

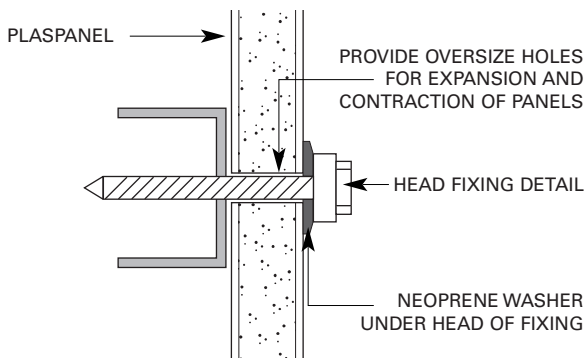
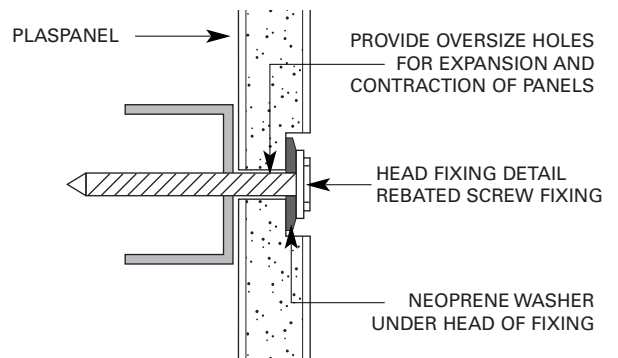


Figure 6



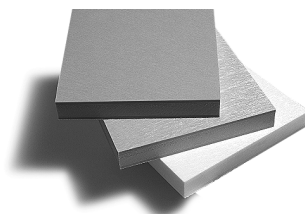
NOTE: DO NOT FIX WITH FORCE. FIXING TO HOLD PANELS IN PLACE TO ALLOW FOR NATURAL EXPANSION & CONTRACTION

Fascia, Walls and Sound Barriers (Outside Applications)

Refer technical department for advice on correct specification and installation recommendations.

- For material expansion and contraction details refer over
- Where applicable ensure the material and glazing system meets the wind loading requirements

www.plaspanel.com



Plaspanel®

Multi-purpose plastic panels

Plaspanel Installation Techniques

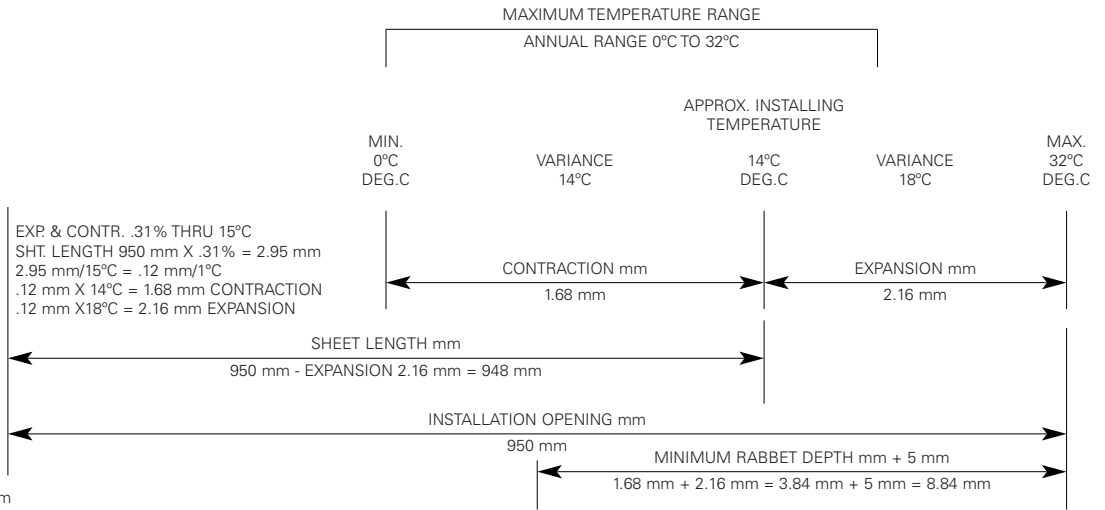
PART 1: EXPANSION & CONTRACTION

Issue: 1 Feb 2006

Technical Data Sheet

Expansion & Contraction Calculation

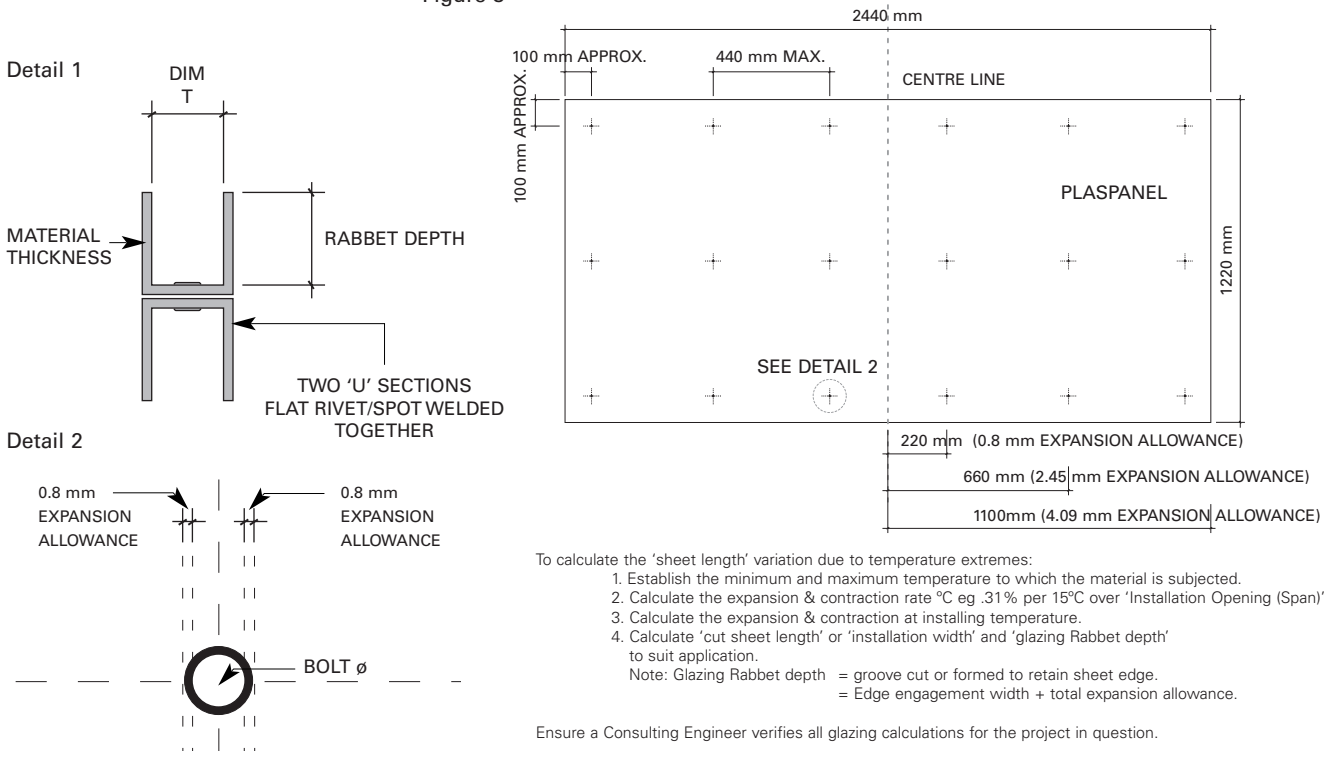
Figure 7: Example



ASSUMPTION

EXP. & CONTR. .31% THRU 15°C
SHT. LENGTH 950 mm X .31% = 2.95 mm
2.95 mm/15°C = .12 mm/1°C
.12 mm X 14°C = 1.68 mm CONTRACTION
.12 mm X 18°C = 2.16 mm EXPANSION

Figure 8



NOTE: PROVIDE OVERSIZE HOLES TO ALLOW FOR NATURAL EXPANSION & CONTRACTION

Plaspanel®

Multi-purpose plastic panels

www.plaspanel.com



Available from: